

IMPACT SUMMARY

2024



Our Approach:

Medha has been rigorously tracking its impact since 2011. Our [Student Information System](#), combined with research studies, captures comprehensive data on students' career preparation, progression, and economic inclusion and agency; allowing us to meticulously measure outcomes and make data-driven improvements.

Through this experience, we have also developed and tested a [career readiness tool](#) that has been shared with peer organizations.

Empirical Evidence:

In addition to our internal data and impact systems, we regularly work with evaluation firms to obtain empirical evidence with counterfactuals on the impact of our programs:

- [RCT Midline Report by J-PAL](#)
- Longitudinal Panel [Baseline](#) and [Endline](#) Reports by [Sambodhi](#)
- [RCT with the World Bank](#) on a tech platform
- [RCT in Uttarakhand](#) to measure the effectiveness of Employability Skill Instructors

While our Data and Impact team also conducts in-house studies:

- [Alumni Connect](#) is an annual survey of Medha alumni to track cohort-wise progression.
- [Dual System of Training \(DST\)](#) is a counterfactual study of vocational education students.

We track the following key indicators:

1

CAREER PREPARATION

%Δ of young adults with greater 21st-Century Skills

%Δ of young adults with increased workplace exposure and experience

%Δ of young adults with improved career plans, awareness, and readiness

2

CAREER PROGRESSION

%Δ of young adults who start income-earning careers

%Δ of young adults who pursue education or training

%Δ of young adults with increased income

%Δ of young adults with increased career satisfaction

3

ECONOMIC INCLUSION AND AGENCY

% of young adults who reach an income level beyond basic subsistence (\$12/day or ₹30,000/month)

% of young adults who have greater agency in their personal and professional lives

Our Outreach

231,564

Students Impacted

4,723

Employer Partnerships

2,491

System Actors Trained

8

Govt. Partnerships

Our Impact

1 CAREER PREPARATION

Our [RCT](#) with J-PAL finds Medha alums have improved career plans, awareness, and readiness

Index

Components

Δ from Non-Medha alums

Career Planning

Standard Deviation
0.253

What is your career goal?

7%

How will you get there? What are the means of accessing this opportunity?

13%

Once you get the opportunity, what will you do to grow in your career?

1%

Do you have an alternative career goal?

10%

Career Awareness

Standard Deviation
0.165

Do you know about job portals? (Yes)

15%

Private sector pays good salary (Agree)

2%

Career Readiness

Standard Deviation
0.559

Do you have a resume/know how to prepare one?

27%

Mock interview performance

12%

What do you plan to do after graduation?

-1%

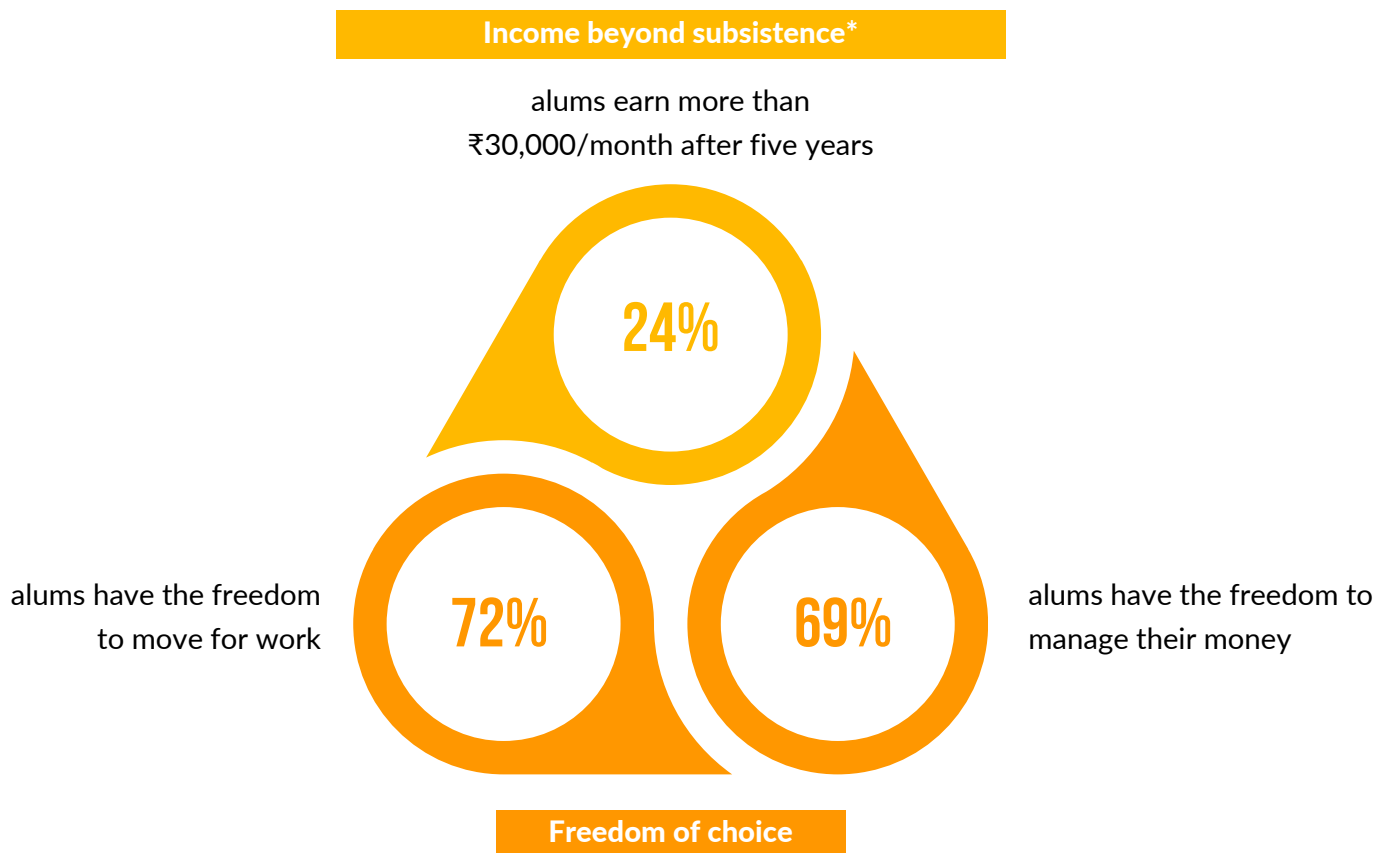
Have you gained any new work experience since joining the research?

11%

2 CAREER PROGRESSION



3 ECONOMIC INCLUSION & AGENCY



*[What is economic inclusion?](#) McKinsey Global Institute, 2024.